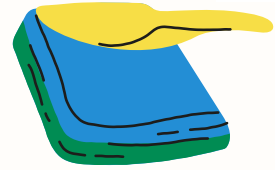




Harpfield Newsletter



This half term at Harpfield



Dear Parents and Carers,

As we reach the end of Spring 1, it has been wonderful to look back on what has been an incredibly busy and enriching half-term. Our pupils have enjoyed a wide range of memorable experiences, including the Year 1 trip to the Brampton Museum, the Year 5 visit to Jodrell Bank and their exciting Space Adventure experience in school. We were also delighted to welcome GB Mountain Biker Danny Butler, who led an inspiring fitness session and assembly that the children thoroughly enjoyed. Our SEND parent coffee morning provided a valuable opportunity to connect with families and strengthen our support network and our football team represented the school brilliantly at their recent tournament.

Still to come this week, our Take the Stage group will be heading to the Young Voices concert in Manchester and all pupils will have the chance to enjoy the immersive Space Dome experience on Friday. We are incredibly proud of everything our children have achieved this half term.

Have a lovely half term and we will see you on Monday 23rd February.

Keep up to date with all school events and activities via Class Dojo and our Facebook page. Diary dates for the 2025-2026 have been shared with you.



Staff Updates

We are pleased to share that Mrs Carlyle will be returning from her maternity leave after half term. She has already been into school to spend time with the children and staff, getting to know the class and supporting a smooth transition back into nursery.

This also means that Mr O'Donoghue's final day with us will be Friday 13th February. We would like to take this opportunity to thank him sincerely for his hard work, dedication and care over the past 12 months while covering the maternity leave. He has been a wonderful part of the team and we are very grateful for all he has done for the children.

Attendance

At the end of every half term, Arbor will send out an automated email informing you of your child's current attendance. Our whole school target for statutory attendance (Reception to Y6) is 96%.

At the end of Spring 1, it is 95.9% Let's get it back over 96% next half term!

Reception - 97% Year 1 - 94.5% Year 2 - 94.6% Year 3 - 98%
Year 4 - 96.7.% Year 5 - 96.2% Year 6 - 95.6%

A polite reminder that holidays during term time are not authorised and may result in a penalty notice issued by the Local Authority. Regular attendance is vital for your child's learning, progress and wellbeing and we ask all families to support us in ensuring children are in school every day unless there is a genuine reason for absence. If you have any questions about attendance or need support, please don't hesitate to contact the school office or the attendance team (Mrs Adlington, Mrs Bailey, Mrs Lockett).

Well done to all of our attendance and punctuality prize winners so far this year!

Diary Dates

12 February - Football Tournament

12 February - Young Voices Concert (*registration will remain open until 9:30am on Friday morning for Take the Stage pupils*)

13 February - Space Dome experience

13 February - Deadline for Special Ladies' Lunch

13 February - Last day of the half term

23 February - Return to school

24 February - Cross- country season begins

2 March - Y5/Y6 Careers Fair (Careers Week in school)

3 March - Mini First Aid for Y2 and Y5

9 March - Non-uniform day for Chocolate Bingo

10 March - Y6 assembly 8:50am

12 March - Nursery Stay and Play session

13 March - Special Ladies' Lunch

17 March - SSP dance rehearsal and show - Victoria Hall

17 March - Y5 assembly 8:50am

18 March - Parents' Evening 3:15-6:15pm

20 March - Enrichment clubs finish

23 March - School Council trip to London

24 March - PTFA Chocolate Bingo 3:15pm start

24 March - Y4 assembly 8:50am

27 March - Termly Celebration Assembly (invite only)

27 March - Last day of the term