



YEAR 1



newsletter

REMINDERS

WE WILL BE VISITING THE COMMUNITY JUNCTION ON WEDNESDAY 4TH MARCH. PLEASE REMEMBER TO BRING £2.50 EXACTLY FOR THE CHILDREN TO PURCHASE BREAKFAST SNACKS. THANK YOU



MATHS

WE ARE COMPLETING OUR ADDITION AND SUBTRACTION UNIT FOR NUMBERS WITHIN 20 WE WILL BE USING A NUMBERLINE AND CONCRETE MATERIAL FOR THIS PROCESS AS WELL AS DRAWING PICTURES TO SHOW DIFFERENT METHODS.

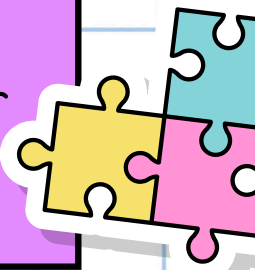
LITERACY

We will be reading and writing a non-chronological report about minibeasts

Reading books to school every day please and please check diaries for any gaps with phonics sounds

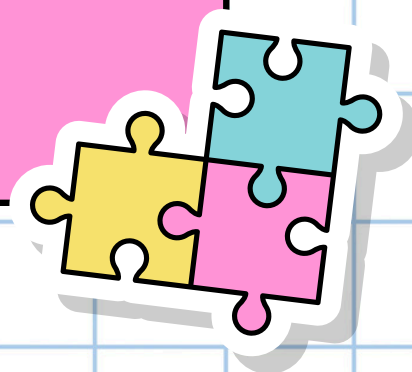
Science

Our next Science topic will be plants and trees and we will be labelling these and learning to identify a variety of different types of plants and trees in our local environment.



PE

**PE WILL BE ON A FRIDAY. PLEASE COME TO SCHOOL
IN PE KITS WITH A FULL WATER BOTTLE AND NO
JEWELLERY - THANK YOU**



Thank you for your continued
and ongoing support.

Please message any of our team
on Class Dojo or speak to us on
the door if you have any worries
or concerns that we can help
you with.

Best Wishes
Mrs Edwards and Mrs Degg

