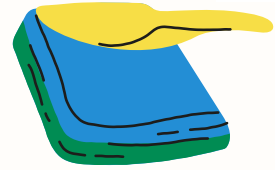




Harpfield Newsletter



This half term at Harpfield



Dear Parents and Carers,

As we come to the end of Autumn Term 2, it's wonderful to reflect on the incredible learning and exciting opportunities our children have experienced. From the magical EYFS and KS1 nativities and our choir spreading festive cheer in the community, to Year 2 mastering scooter skills and Year 1 enjoying a visit from the fire brigade, the term has been full of memorable moments. Our older pupils have embraced challenges too, with Year 5 and 6 completing Bikeability, Police Cadets taking on leadership roles and pupils attending the Film Festival at The Wade Centre. KS2 were also treated to a fantastic trip to the New Vic Theatre to watch *The Little Mermaid*. Alongside phonics parties, football competitions, and so much more, it's been a term to celebrate! And we're not finished yet—KS2 singing, Christmas parties and our festive lunch are still to come.

On behalf of all the staff, I wish you and your families a joyful holiday and a happy, healthy New Year. We look forward to welcoming the children back on Tuesday 6th January for another fantastic term of learning.

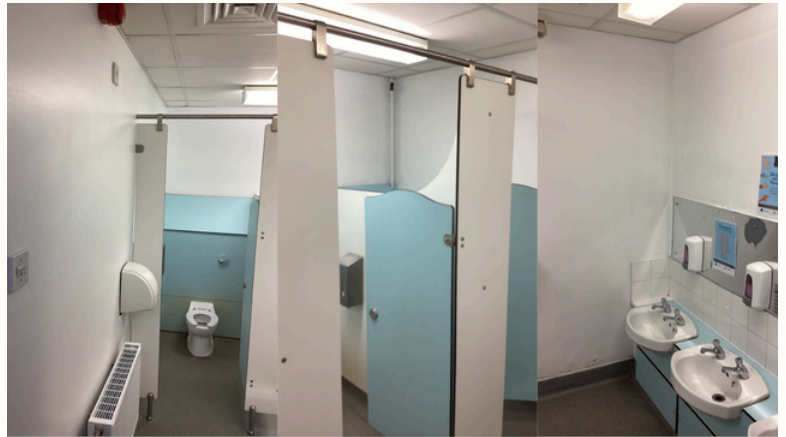
Keep up to date with all school events and activities via Class Dojo and our Facebook page. Diary dates for the 2025-2026 have been shared with you.



Building Works



New DT Kitchen. Before and after.



KS1 Toilets. Before and after.



Our Food Technology room is almost complete - we're just waiting for the tables, chairs and screen to arrive. We can't wait to get in there to complete our D&T lessons! Our KS1 toilets are also looking so much better with their make over. The long term plan is to complete EYFS and KS2 toilets too.

Staff Updates

After more than 30 incredible years of dedicated service at Harpfield, Carole - our beloved kitchen staff member - is retiring. Her hard work, care and commitment have nourished generations of pupils and staff and we are deeply grateful for everything she's done. Please join us in wishing her a happy and well-deserved retirement filled with joy and relaxation.

Next term, we will be welcoming back Miss Holland and Mrs Carlyle to school and we will be saying goodbye to Mr O'Donoghue who has been covering Mrs Carlyle's maternity leave.

Attendance

At the end of every half term, Arbor will send out an automated email informing you of your child's current attendance. Our whole school target for statutory attendance (Reception to Y6) is 96%.

At the end of Autumn 2- it remains at 96%! Well done and thank you!

Reception - 97.4% Year 1 - 94.9% Year 2 - 94.2% Year 3 - 99% (wow!)
Year 4 - 97.% Year 5 - 96.1% Year 6 - 95.6%

A polite reminder that holidays during term time are not authorised and may result in a penalty notice issued by the Local Authority. Regular attendance is vital for your child's learning, progress and wellbeing and we ask all families to support us in ensuring children are in school every day unless there is a genuine reason for absence. If you have any questions about attendance or need support, please don't hesitate to contact the school office or the attendance team.

We have noticed an increasing number of families arriving late to school. While we understand that mornings can be busy, arriving on time is essential for your child's learning and wellbeing. When children arrive late, they miss valuable learning time and the calm start to the day that helps them settle and feel prepared. Regular lateness can disrupt their progress and affect their confidence in class.

Please make every effort to ensure your child is in school and ready to learn by the start of the day. If you are experiencing difficulties that make punctuality challenging, please contact us— we are here to support you.

Diary Dates

- 6 Jan - Start of term
- 7 Jan - After school care club closed for training
- 8 Jan/12 Feb - Football tournament
- 12 Jan - Y1 trip
- 30 Jan - Y5 trip
- 12 Feb - Young Voices (Take the Stage pupils)
- 13 Feb - break up for half term