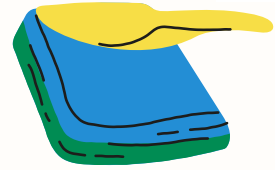




Harpfield Newsletter



This half term at Harpfield



Dear Parents and Carers,

It has been a joy to welcome our children back to school and see them embracing The Harpfield Way from the very first day. Their enthusiasm, kindness and readiness to learn have set a wonderful tone for the term ahead. Senior leaders and I have been regularly visiting classrooms and we are so proud to see pupils working hard, showing positive attitudes and engaging fully in their learning. The energy across the school is inspiring and we're excited for all that this year will bring.

To help your child thrive this year, here are a few simple ways you can support learning at home:

- Talk about their day: Ask open-ended questions to encourage reflection and conversation.
- Read together regularly (at least 4 times a week): Whether it's a bedtime story or a few pages after dinner, shared reading builds vocabulary and comprehension.
- Create a calm homework space: A quiet, distraction-free area helps children focus and feel confident (teachers have shared how to support spelling homework on Class Dojo).
- Celebrate effort: Praise persistence and progress, not just results—this builds resilience and a love of learning.
- Stay connected: Keep in touch with your child's teacher and check in on any messages or updates from school.

Keep up to date with all school events and activities via Class Dojo and our Facebook page. Diary dates for the 2025-2026 have been shared with you.



A Kind Reminder About Conduct on School Grounds

At Harpfield, we are committed to maintaining a safe, welcoming and respectful environment for everyone—children, staff and families alike. We kindly ask all parents and carers to model positive behaviour when on the school site and when interacting with staff and each other. Our team is here to support your child's education and wellbeing and should never be subjected to verbal abuse or aggression. School should be a place free from conflict, where children feel secure and adults work together in partnership. Thank you for helping us uphold these values and for being part of our caring school community.

Attendance

At the end of every half term, Arbor will send out an automated email informing you of your child's current attendance. Our whole school target for statutory attendance (Reception to Y6) is 96%.

At the end of Autumn 1 - 96% (let's keep it there!)

Reception - 99.2% Year 1 - 95.3% Year 2 - 93.8% Year 3 - 98.8%
Year 4 - 97.1% Year 5 - 96.7% Year 6 - 95.2%

A polite reminder that holidays during term time are not authorised and may result in a penalty notice issued by the Local Authority. Regular attendance is vital for your child's learning, progress and wellbeing and we ask all families to support us in ensuring children are in school every day unless there is a genuine reason for absence. If you have any questions about attendance or need support, please don't hesitate to contact the school office or the attendance team.

School Updates

We have some building work starting in school over the half term.

KS1 toilets are having a make over and one of the changing rooms is going to become a Food Technology room so that the Design and Technology units can be taught in a proper kitchen rather than classrooms. Exciting times!

Diary Dates

23 October - Halloween Disco

23 October - Last day of the half term (inset - 24 October)

W/C 3 November - Y5/Y6 Bikeability

4 November - Fire Brigade visit for Y1

4 / 11 / 18 November - EYFS tours (bookings only for September 26 intake)

14 November - Wade Centre Film Festival trip - selected Y5/6 pupils

18 November - Y6 SATS parents' meeting 5pm

26 November - Parents' evening (Arbor bookings)

26 November - KS2 trip to the New Vic Theatre (The Little Mermaid)

8 December - Y2 Scooter Skills Bee Active

11/12 December - EYFS/KS1 Nativities (more information to follow)

12 December - Choir visit to hospital

16 December - Christmas lunch and jumper day

17 December - Christmas parties

18 December - Termly celebration assembly (invite only)

19 December - KS2 Carol Concert (more information to follow)

19 December - Last day of the term