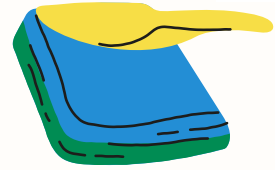




Harpfield Newsletter



This half term at Harpfield



Dear Parents and Carers,

What a wonderful and action-packed spring half term it has been! Our Dance Club shone brightly at The Victoria Hall, performing confidently in front of a huge audience after eight weeks of dedicated practice—what an achievement! Careers Week has been a real highlight too, with a fabulous Careers Fair for our Year 5 and Year 6 pupils inspiring future aspirations. We are also incredibly proud of the excellent results achieved by individual pupils in this season's Cross Country races. Children in Year 2 and Year 5 took part in valuable Mini First Aid sessions, learning important life skills and we enjoyed a truly lovely community event as we welcomed our special ladies into school for a delicious lunch. National Science Week brought excitement and curiosity across the school, with pupils engaging in a wide range of investigations and learning. We also celebrated World Book Day with a range of activities that highlighted the importance of empathy, ambition and collaboration - bringing our school values to life through stories, reading and shared experiences.

Still to come, we are looking forward to the School Council's trip to the Houses of Parliament and our ever-popular PTFA Chocolate Bingo event.

Wishing you all a lovely Easter holiday when it arrives. School reopens on Monday 13th April for our final term of the year.

Keep up to date with all school events and activities via Class Dojo and our Facebook page. Diary dates for the 2025-2026 have been shared with you. Class half termly newsletters are shared with you on Dojo at the start of every half term.



Reminders

Smoking and Vaping: please remain considerate around the school gates and car park during drop-off and collection times. Children and families should not be required to walk through smoke when entering or leaving the site.

Thank you for your cooperation and for helping us maintain a safe and healthy environment for our school community.

Supervision: Children from Nursery up to and including Year 4 must be accompanied to and from school by an adult, or by a responsible young person aged 14 or over. In a morning, they must be taken to their entrance door by an adult. Children in Year 4 or below should not be brought to school by siblings from any other year group.

Please also note that children from all year groups are not permitted to use any play equipment, on any of the playgrounds, before or after school.

Attendance

At the end of every half term, Arbor will send out an automated email informing you of your child's current attendance. Our whole school target for statutory attendance (Reception to Y6) is 96%.

At the end of Spring 2, whole school attendance (Nursery-Y6) is 96.3%; that's 1.6% above the national average! Statutory attendance (Reception-Y6) is 95.9%. Thank you for ensuring that your child is on time and coming to school.

Reception - 96.8% Year 1 - 94.7% Year 2 - 96.5% Year 3 - 97.9%
Year 4 - 96.7% Year 5 - 97.1% Year 6 - 95.6%

Diary Dates

- 20 March - Enrichment clubs finish
- 23 March - School Council trip to London
- 24 March - PTFA Chocolate Bingo
- 24 March - Y4 assembly 8:50am
- 27 March - Termly Celebration Assembly (invite only)
- 27 March - Last day of the term
- 13 April - School opens for the summer term
- 20 April - Shakespeare Week
- 20 April - Enrichment clubs start
- 21 April - Y3 assembly 8:50am
- 22 April - Y6 Maccas Project workshop
- 23 April - NSPCC workshops for Y2 and Y5 and Ruff & Ruby workshop for Y6
- 28 April - SEND Coffee Morning with Donna from Caudwell (all parents welcome)
- 28 April - Y2 assembly 8:50am
- 1 May - Photographers - class and leavers
- 4 May - Bank holiday
- 5 May - Y1 assembly 8:50am
- 7 May - Stay and Play session
- 11 - 14 May - Y6 SATS
- 19 May - Bee Active Circus Skills for EYFS and KS1
- 19 May - Reception assembly 8:50am
- 21 May - Last day of the half term
- 22 May - Inset day

Draft term dates for 2026-2027 have been shared with you on Class Dojo.